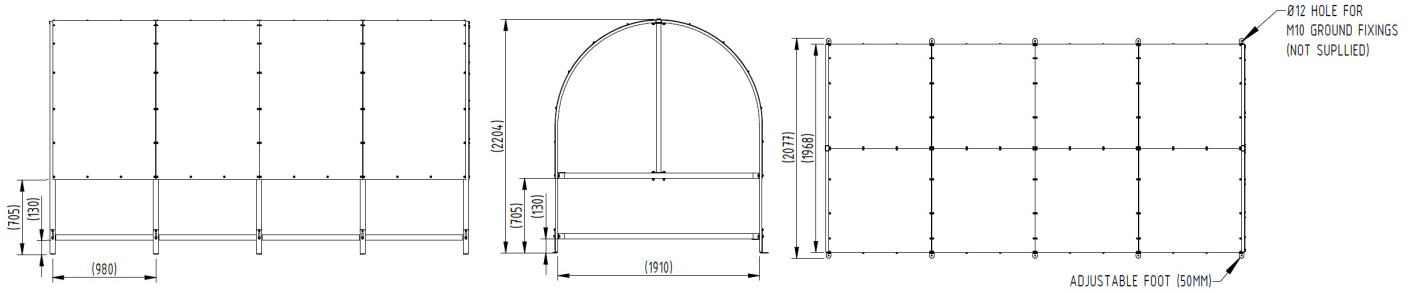




Trolley Shelter

2m x 4m

Galvanised Steel Frame



The perfect product for every retail establishment, the AUTOPA Trolley Shelter will keep your shopping trolleys dry and organised at all times. With a contemporary modular design, this shelter is designed to fit within a standard car parking space. A single shelter will store up to 36 standard sized trolleys. Extension bays can be added to the shelter to increase the storage available as required.

Manufactured from mild steel and 4mm PETG roofing, all of our trolley shelters are galvanised as standard to ensure their longevity.

Available bolt down only.



| Part Number | Description | Weight (kg) |
|-------------|-----------------------------|-------------|
| 138 000 500 | Trolley Shelter, Galvanised | 254kg |

Product details

- 3970mm x 2077mm (length x width)
- 2204mm height (above ground)
- Available bolt down only
- Framework manufactured from 50mm x 25mm mild steel
- 4mm PETG clear sheeting
- Each adjustable foot requires 1 x 10mm bolt

Installation & use

Bolt down to a suitable concrete surface.
 Telescopic, removable and concrete in are supplied with welded fixing spikes to ensure firm ground anchorage into concrete.
 Telescopic, removable and concrete in require a suitable excavated hole for installing into concrete.
 Products are guaranteed for 12 months (if installed and used correctly).

